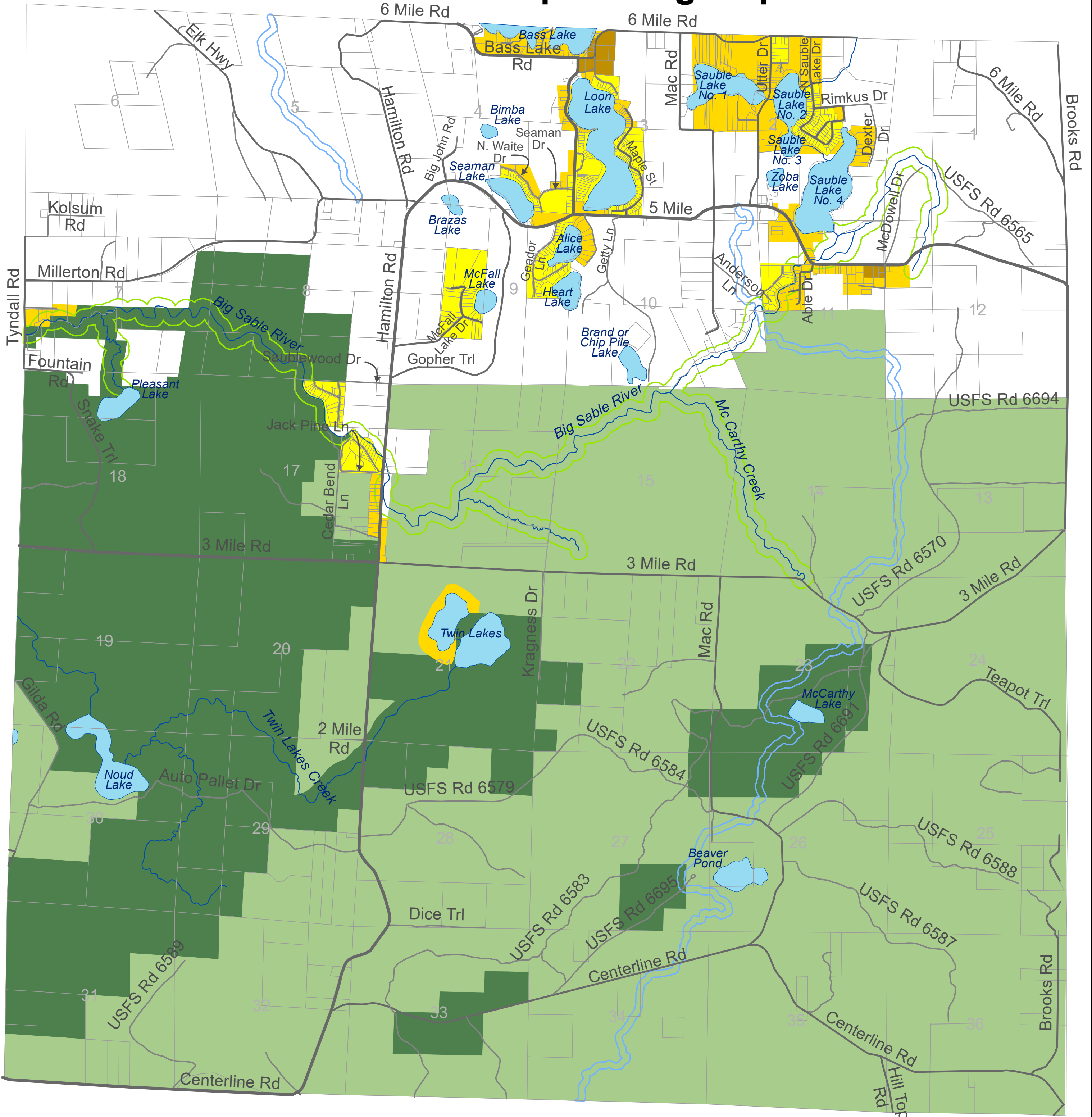


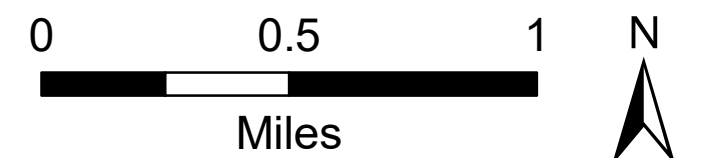
Sauble Township Zoning Map



- Wetland Conservation District
- Forest Conservation District
- Rural Residential District
- Developed Residential District R-1
- New Residential District R-2
- Commercial District
- River Overlay District
- Scenic Trail Overlay District

- Property Boundaries
- County Primary Road
- County Local Road
- Other Road

Map Prepared by:
Northwest Rural Planning, LIAA
July 15, 2022



This is to certify that this is the Official Zoning Map referred to in the Zoning Ordinance of Sauble Township, adopted and effective _____, 2022.

Township Supervisor

Attested by Township Clerk